



Cat No: CXC241- Cervix cancer/adjacent paired tissues

Lot#	Cores	Size	Cut	Format	QA/QC
CXC24101	24	2.5mm	4um	4X6	H&E, IHC anti-Cytokeratin

Recommended applications: This product is for research use only. Designed for cervix adjacent vs cancer RNA or protein tissue profiling using IHC or ISH.

Description: 12 cases of cervical cancer (purple) with corresponding adjacent tissues (pink) from the same patients as controls.

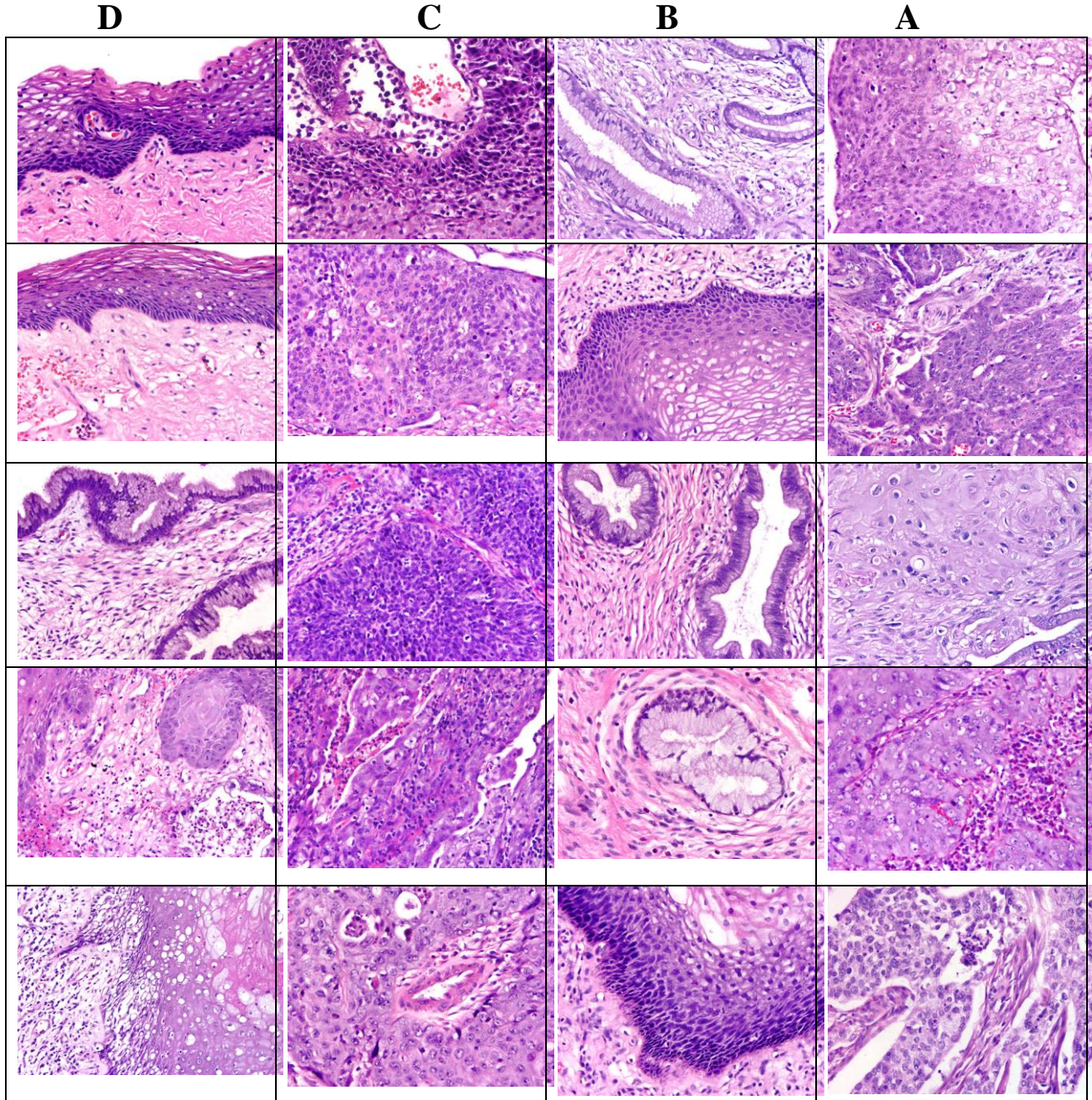
All the tissues were from surgical resection. They were fixed in 10% neutral buffered formalin for 24 hours and processed using identical SOPs. Sections were picked onto Superfrost Plus or APES coated Superfrost slides. They can be stored for use at 4C for up to six months from the date of shipment. **There may be 5 to 10% of tissue core loss.**

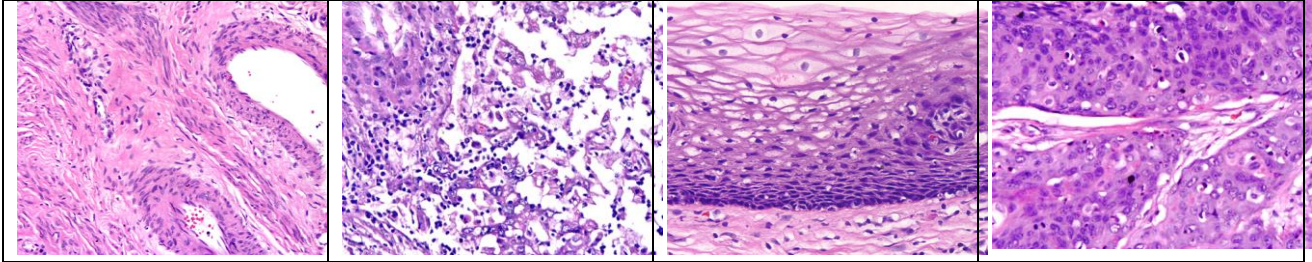
Array Position	Sex	Age	Anatomic Site	Pathology	Grade	Stage
A01	F	41	Uterus, cervix	Squamous cell carcinoma	I~II	T1N0M0
A02	F	44	Uterus, cervix	Squamous cell carcinoma	II	T1N1M0
A03	F	51	Uterus, cervix	Squamous cell carcinoma	II	T1N0M0
A04	F	46	Uterus, cervix	Squamous cell carcinoma	II	T1N0M0
A05	F	44	Uterus, cervix	Squamous cell carcinoma	II	T2N1M0
A06	F	57	Uterus, cervix	Squamous cell carcinoma	III	T1N1M0
B01	F	41	Uterus, cervix	Uninvolved cervix tissue of A1	null	null
B02	F	44	Uterus, cervix	Uninvolved cervix tissue of A2	null	null
B03	F	51	Uterus, cervix	Uninvolved cervix tissue of A3	null	null
B04	F	46	Uterus, cervix	Uninvolved cervix tissue of A4	null	null
B05	F	44	Uterus, cervix	Uninvolved cervix tissue of A5	null	null
B06	F	57	Uterus, cervix	Uninvolved cervix tissue of A6	null	null
C01	F	41	Uterus, cervix	Squamous cell carcinoma	I~II	T1N1M0
C02	F	51	Uterus, cervix	Squamous cell carcinoma	III	T1N0M0
C03	F	43	Uterus, cervix	Squamous cell carcinoma	III	T1N1M0
C04	F	25	Uterus, cervix	Squamous cell carcinoma	III	T1N1M0
C05	F	28	Uterus, cervix	Squamous cell carcinoma	II~III	T1N0M0
C06	F	40	Uterus, cervix	Squamous cell carcinoma	III	T1N0M0
D01	F	41	Uterus, cervix	Uninvolved cervix tissue of C1	null	null
D02	F	51	Uterus, cervix	Uninvolved cervix tissue of C2	null	null
D03	F	43	Uterus, cervix	Uninvolved cervix tissue of C3	null	null
D04	F	25	Uterus, cervix	Uninvolved cervix tissue of C4	null	null
D05	F	28	Uterus, cervix	Uninvolved cervix tissue of C5	null	null
D06	F	40	Uterus, cervix	Uninvolved cervix tissue of C6	null	null

Notes: Bake at 60C for ~60 minutes before use. If antigen retrieving is needed, it is important to avoid **direct-boiling and high pH or high strength** antigen retrieving buffer.



Certified by: Fancai Li, M.D.





TNM Classification: Cervical carcinoma

T- Primary tumor

TX - Primary tumor cannot be assessed

TO - No evidence of primary tumor

Tis - Carcinoma in situ

T1 - Cervical carcinoma confined to uterus (extension to corpus should be disregarded)

T1a Invasive carcinoma diagnosed only by microscopy. Stromal invasion with a maximum depth of 5.0mm measured from the base of the epithelium and a horizontal spread of 7.0mm or less. Vascular space involvement, venous or lymphatic, does not affect classification.

T1a1 Measured stromal invasion 3.0mm or less in depth and 7.0mm or less in horizontal Spread.

T1a2 Measured stromal invasion more than 3.0mm and not more than 5.0mm with a horizontal spread 7.0mm or less.

T1b Clinically visible lesion confined to the cervix or microscopic lesion greater than T1a/IA2.

T1 b1 Clinically visible lesion 4.0cm or less in greatest dimension.

T1b2 Clinically visible lesion more than 4.0cm in greatest dimension.

T2 - Cervical carcinoma invades beyond uterus but not to pelvic wall or to lower third of vagina

T2a Tumor without parametrial invasion

T2b Tumor with parametrial invasion

T3 - Tumor extends to pelvic wall and/or involves lower third of vagina, and/or causes hydronephrosis or non-functioning kidney

T3a Tumor involves lower third of vagina, no extension to pelvic wall

T3b Tumor extends to pelvic wall and/or causes hydronephrosis or non-functioning kidney

T4 - Tumor invades mucosa of bladder or rectum, and/or extends beyond true pelvis (bullous edema is not sufficient to classify a tumor as T4)

N - Regional lymph nodes

NX - Regional lymph nodes cannot be assessed

NO - No regional lymph node metastasis

N1 - Regional lymph node metastasis



Phone: 415-863-2380
Support: info@quickarrays.com

M - Distant metastasis

- MX - Distant metastasis cannot be assessed
- MO - No distant metastasis
- M1 - Distant metastasis